

Radiance

Catalog of Products



Radiance

Commercial cleaning products and packaging supplies for every space, shipment & budget



- Chemicals & Floor Care
- Dilution Control Systems & Dispensers
- Skin Care
- Towels & Tissue
- Janitorial Supplies
- Stretch Films
- Tapes
- Adhesives

Solving

is our passion

Sourcing

is in our DNA

Systems

make it work for you



POLLOCK

TABLE OF CONTENTS

AIR CARE	4
CARPET CARE.....	4-5
DILUTION CONTROL SYSTEMS	6-8
DISINFECTANTS.....	9
FLOOR CARE - STRIPPERS	10
FLOOR CARE - FINISHES/SEALERS	11
FLOOR CARE - MAINTAINERS	12
FLOOR PADS.....	13
FOOD SERVICE.....	15
GENERAL CLEANING.....	16-17
GREEN PRODUCTS.....	18
HAND CARE	19-20
INDUSTRIAL.....	21
LAUNDRY	22
RESTROOM CARE	23
SMART SPRAY	25
WAREWASH	26
PAPER TOWELS & TISSUE	27
CAN LINERS.....	25
JAN SAN SUPPLIES	28
EQUIPMENT	29
STRETCH FILMS & TAPE.....	29
INDEX	31

FRESH SCENT ODOR NEUTRALIZER

Broad spectrum organic odor neutralizer concentrate. Water soluble and formulated with Oxychlorodene for complete odor neutralization. Leaves a pleasant fresh scent.

Fragrance: Fresh **Color:** Clear
Dilution: RTU or 1-4 oz./gal. **pH Range:** 7.0-7.5
Item # Description Pack
10079695 1 qt., Fresh 12/cs
10079697 1 gal., Fresh 4/cs



TOBACCO ODOR NEUTRALIZER

Effective tobacco malodor neutralizer that is very effective in offices and hotel rooms. Also eliminates odors such as onion and garlic.

Fragrance: Characteristic **Color:** Clear
Dilution: Aerosol **pH Range:** n/a
Item # Description Pack
10079983 15 oz. 12/cs



LEMON SCENT ODOR NEUTRALIZER

Destroys odors in kitchens, bathrooms, hotel/motel rooms, smoking lounges and nursing homes. Can be diluted/mixed with other cleaners for use in diaper changing areas, restrooms and trash cans.

Fragrance: Lemon **Color:** Yellow
Dilution: RTU or 1 oz./gal. **pH Range:** 6.5-7.0
Item # Description Pack
10079698 1 gal., Lemon 4/cs
10079710 55 gal., Lemon 1/drum



TROPICAL SCENT ODOR NEUTRALIZER

Destroys odors in kitchens, bathrooms, hotel/motel rooms, smoking lounges and nursing homes. Concentrate can be diluted/mixed with other cleaners for diaper changing areas, public restrooms and trash cans.

Fragrance: Citrus **Color:** Clear/Yellowish
Dilution: RTU or 1 oz./gal. **pH Range:** 6.5-7.0
Item # Description Pack
10079712 1 qt., Tropical 12/cs
10079713 1 gal., Tropical 4/cs



OCEAN BREEZE SCENT ODOR NEUTRALIZER

Instantly deodorizes and leaves a fragrant aroma. Use in bathrooms, sick rooms, basements, smoke filled rooms, offices and anywhere odor is a problem. Eliminates odors such as onion, garlic and smoke.

Fragrance: Characteristic **Color:** Pale Yellow
Dilution: Aerosol **pH Range:** n/a
Item # Description Pack
10079981 15 oz., Ocean Breeze 12/cs



URINAL SCREEN

Contains 15x more fragrance. Releases billions of optimized bacteria to clean/eliminate odors. Flexible design fits any urinal. Great for waterless urinals.

Item # Description Pack
10089359 Tango Mango 10/cs
10089360 Red Clover 10/cs
10089361 Soft Linen 10/cs



CARPET CARE

BONNET SHAMPOO W/ENZYMES

Excellent, concentrated spin bonnet cleaner supercharged with enzymes to digest soils and odors even after the pad has left the carpet.

Fragrance: Citrus **Color:** Clear
Dilution: 11 oz./gal. **pH Range:** 6.0-6.5
Item # Description Pack
10079803 1 gal. 4/cs



CARPET SHAMPOO

Removes deep embedded soil from carpet. Penetrates and encapsulates soil and also brightens carpet fibers. Pleasantly scented, it removes all types of commonly encountered soils and dries to be vacuumed away.

Fragrance: Clean **Color:** Clear
Dilution: 4 oz./gal. **pH Range:** 9.4-9.9
Item # Description Pack
10079802 1 gal. 4/cs



CARPET PRETREATER

Chemical system capable of breaking up entrapped soils in fibrous surfaces like carpet and upholstery. Enzyme fortified to remove odors. Effective pre-spotter for shampoo or extraction or for trouble spots/traffic lanes.

Fragrance: Bland **Color:** Straw
Dilution: 11-13 oz./gal. **pH Range:** 8.5-9.0
Item # **Description** **Pack**
10079804 1 gal. 4/cs



DEBROWNING RINSE

Mild acid removes browning and tannin stains. Neutralizes alkaline residues and serves as an acid spotter. Low foam and deep cleaning action. Use with extraction or bonnet carpet cleaning.

Fragrance: None **Color:** Yellow-Brown
Dilution: RTU **pH Range:** 1.5-2.0
Item # **Description** **Pack**
10079806 1 gal. 4/cs



ENZYME CARPET SPOTTER

Organic carpet and fiber prespot and deodorant. Removes odors and stains in one cleaning application. Excellent on all organic soils. Uses bacteria and enzymes, to break down and consume odors/stains.

Fragrance: Floral **Color:** Milky White
Dilution: RTU or 1-4 oz./gal. **pH Range:** 6.5-7.0
Item # **Description** **Pack**
10079801 1 qt. 12/cs



EXTRACTION CLEANER

Breaks up entrapped soils from fibrous surfaces like carpet and upholstery. Enzyme fortified for odors. Effective pre-spotter for routine shampoo or extraction also cleaner for trouble spots and traffic lanes.

Fragrance: Fresh **Color:** Straw
Dilution: 1/2 oz./gal. **pH Range:** 10.5-11.0
Item # **Description** **Pack**
10079805 1 gal. 4/cs



GEL CARPET SPOTTER

Ready-to-use solvent spotter that easily removes gum, adhesives, tar, oils, grease and tough ink.

Fragrance: Citrus **Color:** White
Dilution: RTU **pH Range:** 9.0-9.5
Item # **Description** **Pack**
10079858 1 qt. 6/cs



GUM REMOVER

This product removes chewing gum, candle wax, putty and other gummy substances from most surfaces. By freezing the substance to approximately -40°F, the chewing gum can then be cracked off for a fast and easy removal.

Fragrance: Cherry **Color:** Colorless
Dilution: RTU **pH Range:** n/a
Item # **Description** **Pack**
10079778 12 oz. 12/cs



HEAVY DUTY CARPET SPOTTER

Ready-to-use solvent spotter for removal of heavy duty stains like paint, oil and tar. Rinses easily with water, leaves no residue.

Fragrance: Banana **Color:** Clear
Dilution: RTU **pH Range:** n/a
Item # **Description** **Pack**
10079859 1 qt. 6/cs



SILICONE EMULSION DEFOAMER

Highly concentrated silicone emulsion defoamer. Use in a wide range of institutional, industrial and janitorial foaming problems. Fast and effective, it destroys bubbles and foam on contact.

Fragrance: Unscented **Color:** White
Dilution: 2.5 oz./5 gal. **pH Range:** 8.0-8.5
Item # **Description** **Pack**
10079807 1 gal. 4/cs



WATER BASED CARPET SPOTTER

Water based stain remover. Removes tough spots from carpet, laundry and upholstery. Effective against a variety of water-based and oil-based stains, pet stains, cosmetics, washable ink, mildew and other stains.

Fragrance: None **Color:** Blue
Dilution: RTU **pH Range:** 9.4-9.9
Item # **Description** **Pack**
10079800 1 qt. 12/cs



The Radiance Dilution Control systems offer the maximum in safety, simplicity, versatility, and economy in convenient concentrate dispensing systems. Our Systems offer simplified product choices for filling of quart bottles, mop buckets and auto-scrubbers. The products are also color-coded and numbered for easy identification.



DEMA EXTREME 4+4 SYSTEM

- Radiance DEMA Extreme System offers safety and economy in a concentrate dispensing system
- A full array of product choices for every day cleaning
- Products are color-coded and numbered for easy identification

Item #	Description	Pack
10079962	4+4	1/ea



DEMA SAFELINK PORTABLE SYSTEM

- Hand held concentrated Dilution Control
- Built in accurate dilution control

Item #	Description	Pack
10126678	Portable	1/ea



SMARTDRAW DUO SYSTEM

- RadianceDuo System offers safety, and economy in a concentrate dispensing system
- A full array of product choices for every day cleaning
- Products are color-coded and numbered for easy identification

Item #	Description	Pack
10079905	2.5 GPM Bottle Fill	1/ea



SMARTDRAW FLEX FOAM SYSTEM

- Hand held concentrated Dilution Control to convert product to foam
- Built in accurate dilution control

Item #	Description	Pack
10079915	Foam	1/ea

#1 GLASS & MULTI-SURFACE CLEANER

Dilution Control Formula. Blue liquid cleaner, can be used for windows, mirrors, windshields, desk tops, tile and hard surfaces. This ammonia-free, non-streaking cleaner removes grime without dulling finishes.

Fragrance: None **Color:** Blue
Dilution: 4 oz./gal. **pH Range:** 11.0-11.5
Label #: 10079798

Item #	Description	Pack
10079873	64 oz.	4/cs



#2 ALL PURPOSE CLEANER

Dilution Control Formula. Removes grease, oil, grime, dirt, soap scum, body oils, hard water stains and inks with ease. This cleaner is formulated for use in institutional, commercial, transportation and food service operations.

Fragrance: Lemon Lime **Color:** Pink
Dilution: 4 oz./gal. **pH Range:** 11.5-12.0
Label #: 10079902

Item #	Description	Pack
10079875	64 oz.	4/cs



#3 HEAVY DUTY MULTI-PURPOSE DEGREASER

Dilution Control Formula. Removes grease, wax, gum, dirt, oil, ink, mildew and mold stains. Provides grease and grime removal properties of a solvent cleaner in a water-based degreaser. Safer to use than solvents.

Fragrance: Characteristic **Color:** Dark Green
Dilution: 4 oz./gal. **pH Range:** 13.5-14.0
Label #: 10079903

Item #	Description	Pack
10079876	64 oz.	4/cs



#4 MULTI-PURPOSE ENZYME DIGESTER

Dilution Control Formula. Super concentrated formula.. Enzyme digests and degrades grease, oil and fats. Makes toilets, sinks, showers and pipelines sparkle while enhancing operation of sewage systems.

Fragrance: Fresh **Color:** White
Dilution: 4 oz./gal. **pH Range:** 7.0-7.5
Label #: 10079945

Item #	Description	Pack
10079877	64 oz.	4/cs



#5 GREEN ECOLOGO® CERTIFIED ALL PURPOSE CLEANER

Dilution Control Formula. EcoLogo® Certified Hard Surface Cleaner CCD-146. No fragrances, glycol ethers, phosphates, flammable or corrosive ingredients. Concentrated all purpose cleaner quickly penetrates and loosens light soils.

Fragrance: None **Color:** Pink
Dilution: 1-4 oz./gal. **pH Range:** 11.0-11.5
Label #: 10079906

Item #	Description	Pack
10079883	64 oz.	4/cs



#6 NON-SOLVENT DEGREASER

Dilution Control Formula. EcoLogo® Certified. Concentrated non-solvent degreaser, penetrates and removes soils. No fragrances, glycol ethers, chlorinated solvents, petroleum solvents, phosphates, flammable or corrosive ingredients.

Fragrance: None **Color:** Orange
Dilution: 1-4 oz./gal. **pH Range:** 11.0-11.5
Label#: 10079907

Item #	Description	Pack
10079885	64 oz.	4/cs



#7 VOC FREE GLASS CLEANER

Dilution Control Formula. Certified to CCD-146A. Contains no ammonia, solvents, fragrances, or other volatile organic compounds. A cleaning solution for windows, metal, plastic, fiberglass and other hard surfaces.

Fragrance: None **Color:** Blue
Dilution: 4 oz./gal. **pH Range:** 7.5-8.0
Label #: 10079974

Item #	Description	Pack
10079887	64 oz.	4/cs



#8 BATH & BOWL CLEANER

Dilution Control Formula. For daily cleaning of sinks, tubs, toilets, porcelain, drinking fountains, grout and metal fixtures. Removes soap scum, hard water and rust deposits from toilet bowls and urinals. Contains no solvents or fragrances.

Fragrance: None **Color:** Yellow
Dilution: 6 oz./gal. **pH Range:** 0.5-1.0
Label #: 10079909

Item #	Description	Pack
10079888	64 oz.	4/cs



#9 TROPICAL SCENT ODOR NEUTRALIZER

Dilution Control Formula. Destroys odors at the source, leaving a pleasant fragrance. Removes tobacco smoke, organic soils, mold odors and other odors from hotel rooms, offices and restrooms.

Fragrance: Orange **Color:** Light Yellow
Dilution: 4 oz./gal. **pH Range:** 6.5-7.0
Label #: 10079910

Item #	Description	Pack
10079874	64 oz., Tropical	4/cs



#10 DAILY FLOOR MOP CLEANER

Dilution Control Formula. Rinse free neutral damp mop concentrate saves time and labor costs in daily floor maintenance.

Fragrance: Tangy Fruit **Color:** Red
Dilution: 1/4-1 1/2 oz./gal. **pH Range:** 7.5-8.0
Label #: 10079850

Item #	Description	Pack
10079895	64 oz.	4/cs



#11 OXY NATURAL DEGREASER

Dilution Control Formula. EcoLogo® Certified. A blend of environmentally preferable ingredients, this biodegradable neutral cleaner contains no alcohols or phosphates. Great for cleaning, whitening and deodorizing most hard/soft surfaces.

Fragrance: Orange **Color:** Clear
Dilution: 6 oz./gal. **pH Range:** 5.5-6.0
Label#: 10079899

Item #	Description	Pack
10079897	64 oz.	4/cs



#21 FRESH SCENT NEUTRAL DISINFECTANT

Dilution Control Formula. Effective against wide variety of gram positive/negative bacteria. Non-corrosive/non-staining solutions on plastic, vinyl, synthetics, enamel, tile and most common metals. Pleasant fresh scent.

Fragrance: Fresh **Color:** Blue
Dilution: 2 oz./gal. **pH Range:** 7.5-8.0
Label #: 10079720

Item #	Description	Pack
10079878	64 oz., Fresh	4/cs



#12 CONCENTRATED FLOOR MAINTAINER

Dilution Control Formula. Floor restorer/maintainer for low and ultra high speed maintenance. Can be diluted for spray buff or mop-on procedures.

Fragrance: Characteristic **Color:** White
Dilution: 2 oz./gal. **pH Range:** 7.5-8.0
Label #: 10079900

Item #	Description	Pack
10079828	64 oz.	4/cs



#22 ONE STEP ALL PURPOSE DISINFECTANT CLEANER

Dilution Control Formula. One-step disinfectant/cleaner/sanitizer and mildewstat-deodorant. Effective in water up to 400 ppm hardness. Removes hard water deposits/lime soap buildups.

Fragrance: None **Color:** Pink
Dilution: .75-4 oz./gal. **pH Range:** 2.5-3.0
Label #: 10079975

Item #	Description	Pack
10079751	64 oz.	4/cs



#14 EXTRACTION CLEANER

Dilution Control Formula. Pleasant fresh fragrance carpet cleaner for extraction cleaners. Penetrates carpet, loosen soils quickly to be vacuumed into machine. Eliminates odors leaving carpet smelling clean.

Fragrance: Fresh **Color:** Straw
Dilution: 1/2 oz./gal. **pH Range:** 10.5-11.0
Label #: TBD

Item #	Description	Pack
10079985	64 oz.	4/cs



#23 FOOD SERVICE SANITIZER

Dilution Control Formula. When used as directed, this product is formulated to sanitize hard nonporous surfaces: Walls, metal surfaces, stainless steel surfaces, glazed porcelain, glazed ceramic tile, plastic surfaces and bathrooms.

Fragrance: None **Color:** Blue
Dilution: 1/4 oz./gal. **pH Range:** 6.5-7.0
Label #: 10079721

Item #	Description	Pack
10079881	64 oz.	4/cs



#16 NON-ACID BATHROOM DISINFECTANT

Dilution Control Formula. One-step disinfectant cleaner, effective against broad spectrum of bacteria, virucidal (including HIV-1) and fungicidal. Inhibits mold/mildew growth and related odors when used as directed.

Fragrance: Floral **Color:** Purple
Dilution: 2 oz./gal. **pH Range:** 11.0-11.5
Label #: 10079699

Item #	Description	Pack
10079879	64 oz.	4/cs



#35 PEROXIDE DISINFECTANT CLEANER

Dilution Control Formula. Concentrated disinfectant/cleaner for glass, toilet bowls and urinals, food service contact surfaces, whirlpools, etc. Also used as carpet cleaner/spotter/pre-spray. Use as directed for effective disinfectant against most bacteria and viruses.

Fragrance: None **Color:** Clear
Dilution: 2 oz./gal. **pH Range:** 2.0-2.5
Label#: 10127684

Item #	Description	Pack
10117611	64 oz.	4/cs



#17 256 HI-Q NEUTRAL DISINFECTANT

Dilution Control Formula Phosphate free, pH neutral formulation provides effective disinfection where controlling cross contamination hazards on treated surfaces is of prime importance.

Fragrance: Floral **Color:** Blue
Dilution: 1/2 oz./gal. **pH Range:** 6.0-6.5
Label #: 10079715

Item #	Description	Pack
10079880	64 oz.	4/cs



#36 LAVENDER ALL PURPOSE CLEANER

Dilution Control Formula. Deodorizing neutral cleaner recommended for cleaning all hard surfaces including floors, walls, restroom surfaces and other areas where light duty daily cleaning is performed. No rinse required.

Fragrance: Lavender **Color:** Purple
Dilution: 2 oz./Gal. **pH Range:** 7.0-7.5
Label#: 10127686

Item #	Description	Pack
10126617	64 oz.	4/cs



FOAMING MULTI-PURPOSE DISINFECTANT CLEANER

Non-abrasive, cleaner/disinfectant. Not harmful on hard washable surfaces: walls, woodwork, floors, tiles, wash basins, bathtubs, toilet seats, venetian blinds, chrome/stainless steel, canopies and appliances.

Fragrance: Lemon **Color:** Clear
Dilution: Aerosol **pH Range:** 12.5-13.0

Item #	Description	Pack
10079732	20 oz.	12/cs



FRESH SCENT NEUTRAL DISINFECTANT

One-step germicidal disinfectant, cleaner, deodorizer for general cleaning and mold/mildew control on hard, non-porous environmental surfaces. Cleans quickly, removing dirt, grime, mold, mildew, body oils, and other common soils.

Fragrance: Fresh & Clean **Color:** Blue
Dilution: 4 oz./gal. **pH Range:** 7.5-8.0

Item #	Description	Pack
10079745	1 gal., Fresh	4/cs
10079743	5 gal., Fresh	1/pail
10079746	55 gal., Fresh	1/drum



GERMICIDAL SPRAY CLEANER

Quat based disinfectant/detergent. Kills harmful bacteria and viruses in restroom showers. Cleans and disinfects hard non-porous surfaces. Virucidal, tuberculocidal, fungicidal and mildewstat.

Fragrance: Lemon **Color:** Clear
Dilution: RTU **pH Range:** 11.5-12.0

Item #	Description	Pack
10079748	1 qt.	12/cs



HARD SURFACE SANITIZER

Cleaning and sanitizing of equipment, utensils, and surfaces minimizes contaminating food. This product is the perfect sanitizer for all food contact surfaces. This ready-to-use formula guarantees proper levels of active agents.

Fragrance: None **Color:** Clear
Dilution: RTU **pH Range:** 7.0-7.5

Item #	Description	Pack
10079749	1 qt.	12/cs



LEMON DETERGENT DISINFECTANT

Disinfects inanimate hard surfaces such as walls, floors, sink tops, toilet bowls, tables, chairs, telephones and bed frames. Used for larger areas such as operating rooms, patient care facilities and restrooms.

Fragrance: Lemon **Color:** Yellow
Dilution: 2 oz./gal. **pH Range:** 11.5-12.0

Item #	Description	Pack
10079752	1 qt., Lemon	12/cs
10079753	1 gal., Lemon	4/cs



LEMON SCENT NEUTRAL DISINFECTANT

One-step germicidal disinfectant, cleaner, deodorizer for general cleaning and mold/mildew control on hard, non-porous environmental surfaces. Cleans quickly, removing dirt, grime, mold, mildew, body oils, and other common soils.

Fragrance: Lemon **Color:** Yellow
Dilution: 4 oz./gal. **pH Range:** 7.5-8.0

Item #	Description	Pack
10079739	1 gal., Lemon	4/cs



MEGA MOP Q DISINFECTANT

One-step disinfectant cleaner effective against a broad spectrum of bacteria. Used as directed, it is virucidal (including HIV-1), fungicidal and inhibits growth of mold/mildew and their odors.

Fragrance: Floral **Color:** Purple
Dilution: 2 oz./gal. **pH Range:** 7.5-8.0

Item #	Description	Pack
10079755	1 gal.	4/cs
10079756	55 gal.	1/drum



MEGA Q 256 NEUTRAL DISINFECTANT

Phosphate free, pH neutral. Provides effective disinfection where housekeeping is of prime importance in controlling cross contamination hazards on treated surfaces.

Fragrance: Floral **Color:** Blue
Dilution: 1/2 oz./gal. **pH Range:** 6.0-6.5

Item #	Description	Pack
10079754	1 gal.	4/cs



PINE SCENT NEUTRAL DISINFECTANT

One-step germicidal disinfectant cleaner/deodorant for general cleaning, disinfecting, deodorizing, and controlling mold and mildew. Removes soils found in healthcare and hospitality, public areas and restrooms.

Fragrance: Pine **Color:** Brown
Dilution: 4 oz./gal. **pH Range:** 7.5-8.0

Item #	Description	Pack
10079742	1 gal., Pine	4/cs
10079741	5 gal., Pine	1/pail



SURFACE DISINFECTANT & DEODORIZING AEROSOL

Spray disinfects/deodorizes surfaces. Kills Pseudomonas aeruginosa. A tuberculocidal against Mycobacterium bovis (BCG) when used as directed. Kills HIV-1, Influenza A2 England Virus and Herpes simplex virus.

Fragrance: Bouquet **Color:** Clear
Dilution: Aerosol **pH Range:** 10.0-10.5

Item #	Description	Pack
10079730	16 oz.	12/cs



ACTION FLOOR STRIPPER

Rinse free stripper combining powerful solvents and wetting agents to completely strip the toughest floor without the need for floor machines or excessive scrubbing. Saves time and money.



Fragrance: Butyl **Color:** Clear
Dilution: 13-32 oz./gal. **pH Range:** 13.5-14.0

Item #	Description	Pack
10079810	1 gal.	4/cs
10079809	5 gal.	1/pail

SELF-FOAMING BASEBOARD STRIPPER

Heavy-duty foam removes excess dirt, and floor finish where floor machines cannot reach. Use on baseboards, floors and ceramic wall tiles in offices, hallways, kitchens, bathrooms.



Fragrance: Solvent **Color:** Brown
Dilution: Aerosol **pH Range:** 11.5-12.5

Item #	Description	Pack
10080001	20 oz.	12/cs

ECONOMY FLOOR STRIPPER

Highly effective floor finish emulsifier solubilizes aged and built-up finishes almost instantly.



Fragrance: Butyl **Color:** Clear
Dilution: 8-64 oz./gal. **pH Range:** 13.5-14.0

Item #	Description	Pack
10079808	5 gal.	1/pail

SUPER FLOOR NO RINSE STRIPPER

Concentrated yet powerful enough to rip through the hardest, highly burnished floors, removing old layers of finish in minutes. If time and trouble of stripping old finish from your floors is a concern, this product is the answer.



Fragrance: None **Color:** Clear
Dilution: 13-32 oz./gal. **pH Range:** 12.0-12.5

Item #	Description	Pack
10079813	1 gal.	4/cs
10079812	5 gal.	1/pail



ACRYLIC FLOOR SEALER/FINISH

Seals and finishes stone, terrazzo and concrete floors. Compatible with all types of acrylic emulsion finishes. Wetting agents allow for the penetration and sealing of microscopic pores.



Fragrance: Characteristic
Dilution: RTU
Item # **Description**
10079814 5 gal.

Color: White
pH Range: 8.0-8.5
Pack
 1/pail

HIGH GLOSS 18% FLOOR FINISH

Simplified floor finish that providing tough and durable superior high gloss finish. Self-sealing so less product needed to provide superior wet look gloss. Formulated for low, high and ultra high speed maintenance.



Fragrance: Characteristic
Dilution: RTU
Item # **Description**
10079817 1 gal.
10079816 5 gal.

Color: White
pH Range: 8.0-8.5
Pack
 4/cs
 1/pail

HIGH GLOSS 20% FLOOR FINISH

Premium floor finish offering high gloss within 3 to 5 coats. Extremely durable, reducing maintenance by controlling scuffing and scratching. Maintain with high speed/ultra high speed burnishing equipment.



Fragrance: Characteristic
Dilution: RTU
Item # **Description**
10079824 1 gal.
10079823 5 gal.
10079825 55 gal.

Color: White
pH Range: 8.0-8.5
Pack
 4/cs
 1/pail
 1/drum

HIGH GLOSS 22% FLOOR FINISH

For heavy traffic areas like supermarkets, retail, and institutional settings on resilient flooring. Water-based urethane emulsion gives superior wet look gloss with superb detergent resistance. Stays looking clean longer.



Fragrance: Characteristic
Dilution: RTU
Item # **Description**
10079833 1 gal.
10079832 5 gal.

Color: White
pH Range: 8.5-9.0
Pack
 4/cs
 1/pail

HIGH BEAM 23% FLOOR FINISH

High beam floor finish for industrial use.



Fragrance: Characteristic
Dilution: RTU
Item # **Description**
10103896 5 gal.

Color: White
pH Range: 8.0-8.5
Pack
 1/pail

HIGH GLOSS 25% FLOOR FINISH

Require less coats and still gives the desired high gloss. Finish dries to a clear film that will not yellow over time. It has a special polymer, resin, wax ratio that provides superior initial gloss and unsurpassed durability.



Fragrance: Characteristic
Dilution: RTU
Item # **Description**
10079819 1 gal.
10079818 5 gal.

Color: White
pH Range: 8.0-8.5
Pack
 4/cs
 1/pail

HIGH SPEED 25% FLOOR FINISH

Ultimate in appearance and durability; maximum protection in fewer coats. Perfect for high speed and propane burnishers, it also maintains its high appearance level even when buffing is not possible.



Fragrance: Characteristic
Dilution: RTU
Item # **Description**
10079831 1 gal.
10079830 5 gal.

Color: White
pH Range: 8.0-8.5
Pack
 4/cs
 1/pail

OIL BASED 40% URETHANE FINISH

Effectively seals/protects wood floors from heaviest traffic, while providing a high gloss, slip-free surface. Highly chemical resistant, it makes an ideal finish for wood floors and wood court floors.



Fragrance: Characteristic
Dilution: RTU
Item # **Description**
10079837 5 gal.

Color: Brown
pH Range: n/a
Pack
 1/pail

WATER BASED ACRYLIC URETHANE SEALER

Water-based sealer for use on concrete, brick, slate, quarry tile floors and unglazed ceramic tile. Easy to apply and fast drying, it can be used over most solvent sealers.



Fragrance: None
Dilution: RTU
Item # **Description**
10079836 1 gal.
10079835 5 gal.

Color: White Opaque
pH Range: 8.0-8.5
Pack
 4/cs
 1/pail

WATER BASED WOOD FLOOR CLEANER

Perfect for cleaning wood flooring. Effective at removing scuff marks and grime without harming the floor. Effectively tacks floor prior to applying water borne finishes.



Fragrance: Solvent
Dilution: 4-6 oz./gal.
Item # **Description**
10079834 1 gal.

Color: Green
pH Range: 10-11
Pack
 4/cs

ACIDIC DAMP MOP CLEANER

Rinse free, neutral, damp mop concentrate saves time/labor costs of daily floor maintenance. Maintains high gloss acrylic floor finish and removes soils without leaving a dulling film. Easily and rapidly emulsifies soils.



Fragrance: Lime
Dilution: 1-3 oz./gal.
Item # **Description**
 10079841 1 gal.

Color: Green
pH Range: 2.5-3.0
Pack
 4/cs

CONCENTRATED FLOOR MAINTAINER

Highly concentrated floor restorer/maintainer for low and ultra high speed maintenance programs.



Fragrance: Characteristic
Dilution: 5-13 oz./gal.
Item # **Description**
 10079827 1 gal.
 10079826 5 gal.

Color: White
pH Range: 7.5-8.0
Pack
 4/cs
 1/pail

DEEP SCRUB FLOOR CLEANER RECOAT

Perfect for top scrub and recoat applications. Removes 1 to 2 coats of soil and worn floor finish in preparation for recoating. Saves time/labor versus strip and recoat.



Fragrance: Fresh
Dilution: 1-2 oz./gal.
Item # **Description**
 10079842 1 gal.

Color: Blue
pH Range: 10.5-11.0
Pack
 4/cs

DEEP SCRUB FLOOR CLEANER

Perfect for top scrub and recoat applications. Removes 1 to 2 coats of soil and worn floor finish in preparation for recoating. Saves time/labor versus strip and recoat.



Fragrance: Fresh
Dilution: 1-2 oz./gal.
Item # **Description**
 10081290 5 gal.

Color: Blue
pH Range: 10.5-11.0
Pack
 1/pail

NEUTRAL DAILY RINSE FREE MOP CLEANER

Highly concentrated floor restorer/maintainer for low and ultra high speed maintenance programs.



Fragrance: Lemon
Dilution: 2-6 oz./gal.
Item # **Description**
 10079839 1 gal.
 10079838 5 gal.

Color: Yellow
pH Range: 8.0-8.5
Pack
 4/cs
 1/pail

OIL-BASED DUST MOP TREATMENT

Oil-based dust formulation attracts dust and dirt to mops and cloths. Increases dust catching capabilities and eliminates flying dust. For finished resilient asphalt, vinyl, rubber and linoleum floors. Extends floor finish life.



Fragrance: Lemon
Dilution: Aerosol
Item # **Description**
 10080002 20 oz.

Color: Pale Yellow
pH Range: n/a
Pack
 12/cs

SPRAY MAINTAINER

Used with high speed or low speed floor machines to repair/restore metal cross link finishes. Leaves a high gloss, durable, slip resistant finish when used regularly. Pleasant lemon fragrance.



Fragrance: Lemon
Dilution: RTU
Item # **Description**
 10079820 1 qt.
 10079821 1 gal.

Color: White
pH Range: 7.5-8.0
Pack
 12/cs
 4/cs

WATER BASED DUST MOP TREATMENT

Used on dust mops, rags and other articles to help pick up and hold dust instead of spreading it around. Non-staining; leaves no oily residue on surfaces when directions are followed.



Fragrance: Sassafras
Dilution: RTU or 64 oz./1 gal.
Item # **Description**
 10079844 1 qt.
 10079845 1 gal.

Color: Blue
pH Range: 9.5-10.0
Pack
 12/cs
 4/cs

NATURAL WHITE BURNISHING FLOOR PADS

Natural hair and synthetic fiber pad for optimum mark removal. Use on harder finishes or high-traffic areas. Removes scratches and marks while polishing.



Item #	Description	Pack
10098759	20", White	5/cs
10098757	27", White	5/cs

NATURAL TAN HOG HAIR FLOOR PADS

A natural pad for scratch removal on hard finishes; designed for low frequency burnishing programs.



Item #	Description	Pack
10099061	19", Tan	5/cs
10099051	20", Tan	5/cs

SUPER HOG HAIR FLOOR PADS

Higher content hog's hair and synthetic fiber pad designed for scratch removal on hard finishes. Designed for low frequency burnishing programs.



Item #	Description	Pack
10099052	20"	5/cs

AQUA ULTRA HIGH SPEED BURNISHING PAD

Problem-solver for soft finishes. Produces a brilliant gloss. Exceptional durability and life.



Item #	Description	Pack
10099083	20" dia. x 1" Thick, 3.375" Center Hole, Aqua, Nylon/ Polyester Fiber	5/cs

HIGH PERFORMANCE STRIPPING FLOOR PAD

Industry standard against which all other stripping pads are compared. Maintains consistent high performance throughout the life of the pad.



Item #	Description	Pack
10099062	20"	5/cs

WHITE POLISHING FLOOR PADS

For buffing very soft finishes or for polishing soft waxes on wood floors. Removes scuffs and black heel marks and enhances floor appearance.



Item #	Description	Pack
10099074	13", White	5/cs
10099079	17", White	5/cs
10099064	19", White	5/cs
10098758	20", White	5/cs

RED BUFFING FLOOR PADS

Cleans when wet, buffs when dry. Cleans and removes scuff marks while polishing floors to a high gloss.



Item #	Description	Pack
10099055	13", Red	5/cs
10099066	14", Red	5/cs
10099094	15", Red	5/cs
10099057	17", Red	5/cs
10099076	19", Red	5/cs
10099053	20", Red	5/cs

GREEN SCRUBBING FLOOR PADS

Extra heavy-duty pad removes dirt, spills and scuffs, leaving a clean surface ready for recoating.



Item #	Description	Pack
10099088	13", Green	5/cs
10099072	17", Green	5/cs
10099725	19", Green	5/cs
10099059	20", Green	5/cs

BLUE CLEANING FLOOR PADS

For heavy-duty scrubbing prior to recoating. Removes dirt, spills and scuffs, leaving a clean surface ready for recoating.



Item #	Description	Pack
10099058	13", Blue	5/cs
10099085	14", Blue	5/cs
10099060	16", Blue	5/cs
10099056	17", Blue	5/cs
10099081	19", Blue	5/cs
10099063	20", Blue	5/cs

BLACK STRIPPING FLOOR PADS

For light duty cleaning; won't scratch or dull surfaces. Ideal for glass, stainless steel, chrome, copper, porcelain and ceramic.



Item #	Description	Pack
10099067	13", Black	5/cs
10099070	17", Black	5/cs
10099068	19", Black	5/cs
10099050	20", Black	5/cs



Floor Product Selector Guide

		CONVENTIONAL						HIGH SPEED					ULTRA HIGH SPEED					
		175 - 300 RPM Swing Buffer						1000-1500 RPM Burnisher					1500 + RPM Burnisher					
		Vinyl / Abestos Tile	Vinyl Composite Tile	Terrazzo	Marble / Stone	Linoleum	Concrete	Wood	Vinyl / Abestos Tile	Vinyl Composite Tile	Terrazzo	Marble / Stone	Linoleum	Vinyl / Abestos Tile	Vinyl Composite Tile	Terrazzo	Marble / Stone	Linoleum
STRIPPERS																		
Economy Floor Stripper	10079808																	
Action Floor Stripper	10079809 10079810																	
Super Floor Stripper	10079812 10079813																	
Baseboard Stripper	10080001																	
Floor Finish Stripper - Green	10081172 10079892																	
SEALERS																		
Acrylic Floor Sealer/Finish	10079814 10079815																	
Acrylic Urethane Sealer	10079835 10079836																	
FINISHES																		
High Gloss 18	10079816 10079817																	
High Gloss 25	10079818 10079819																	
Basic Floor Finish	10079822																	
High Gloss 20	10079823 10079824																	
High Gloss Sealer Finish 18	10079829																	
High Gloss 22	10079832 10079833																	
High Speed 25	10079830 10079831																	
High Beam - 23% Floor Finish	10103896																	
20% Floor Finish - Green	10079893																	
MAINTAINERS																		
Concentrated Floor Maintainer	10079826 10079827																	
Spray Maintainer	10079820 10079821																	
CLEANERS																		
Neutral Daily Damp Mop	10079838 10079839																	
Daily Floor Mop - Green	10079894																	
Acidic Damp Mop	10079841																	
Deep Scrub Floor Cleaner	10079842 10081290																	
Oil Based Dust Mop Treatment	10080002																	
Water Based Dust Mop Treatment	10079844 10079845																	

ALL PURPOSE DELIMER

Effective in removing lime, scale and other mineral deposits such as iron associated with hard water.

Fragrance: None

Dilution: 0.25-4 oz./gal.

Item #	Description
10079853	1 gal.
10079854	55 gal.

Color: Green

pH Range: <1.0

Pack
4/cs
1/drum



DUAL ACID BLEND LIME REMOVER

Effective in removing lime, scale and other mineral deposits such as iron associated with hard water.

Fragrance: Characteristic

Dilution: 0.25-4 oz./gal.

Item #	Description
10079852	1 gal.

Color: Green

pH Range: <1.0

Pack
4/cs



ENZYME DEGREASER DIGESTER

Enzyme floor cleaner digests grease and other organic soils on tile floors. Residual action eliminates buildup in grout lines. Eliminates odors from restroom floors and digests grease in drain to keep flowing and odor free.

Fragrance: None

Dilution: 1 oz./gal.

Item #	Description
10097979	1 gal.

Color: Green

pH Range: 5.5-6.0

Pack
4/cs



FOOD SERVICE SANITIZER

40CFR180.940 approved for food processing equipment, utensils, and contact articles at a concentration of 200 ppm active. For use as a sanitizer on dishes, glassware, and utensils. As disinfectant on hard, nonporous surfaces.

Fragrance: None

Dilution: 0.25-0.8 oz./gal.

Item #	Description
10079758	1 gal.
10079757	5 gal.

Color: Clear

pH Range: 7.0-7.5

Pack
4/cs
1/pail



FREEZER CLEANER

A blend of solvents and surfactants that loosen organic soils from freezer walls, floors, ceilings and shelving, including grease, fats, oils, food deposits, grime and all freezer soils. Easy removal of soils without freezing.

Fragrance: None

Dilution: RTU

Item #	Description
10079796	1 gal.

Color: Clear

pH Range: 13.0-13.5

Pack
4/cs



SMOKEHOUSE CLEANER

Used for cleaning in the food processing industry including ovens, grills, conveyers, fryers, smokehouses for heavily carbonized or greasy soils. Effective for soak and low pressure applications as well as foaming.

Fragrance: None

Dilution: 1 1/2-6 oz./gal

Item #	Description
10088024	55 gal.

Color: Dark Brown

pH Range: 13-13.5

Pack
1/drum



OVEN & GRILL CLEANER

Use on porcelain, glass, ceramics, stainless steel and cast iron surfaces. Not for use on self-cleaning or continuous cleaning ovens. Keep product away from components and surfaces which might be affected by caustics.

Fragrance: Characteristic

Dilution: Aerosol

Item #	Description
10080003	20 oz.

Color: Clear

pH Range: 13-14

Pack
12/cs



NON-BUTYL FOAMING DEGREASER

Labor-saving product forms a thick, stable foam that clings to vertical surfaces when applied with a "foam gun". Longer contact time allows this product to remove grease, oil, fat, dirt and grime from all washable surfaces.

Fragrance: None

Dilution: 2-6 oz./gal.

Item #	Description
10079848	1 gal.
10085632	55 gal.

Color: Red

pH Range: 12.5-13.0

Pack
4/cs
1/drum



OVEN & GRILL CLEANER

For hard cleaning jobs, this product immediately dissolves oil, grease and baked-on carbon. Ready-to-use, no mixing of harsh or dangerous chemicals.

Fragrance: Citrus

Dilution: RTU

Item #	Description
10079744	32 oz.
10079849	1 gal.

Color: Brown

pH Range: 13.5-14.0

Pack
12/cs
4/cs



QUARRY TILE CLEANER

Concentrated blend of mild acidic detergents, wetting agents, soil suspenders and water conditioners. Suspends greasy soils. Penetrates porous surfaces, providing deep cleaning and improved traction.

Fragrance: None

Dilution: RTU or 3 oz./gal.

Item #	Description
10079851	1 gal.

Color: Dark Pink

pH Range: 2.0

Pack
4/cs



ALCOHOL BASED GLASS CLEANER

Blend of surfactant and detergent, fortified with alcohol, perfect for light and general cleaning. Streak and film free, leaves surfaces shining. Effective on lipstick, soap scum and greasy handprints on mirrors/glass surfaces.

Fragrance: Clean

Color: Light Blue

Dilution: RTU

pH Range: 9.5-10.0

Item #	Description	Pack
10079762	1 qt.	12/cs
10079763	1 gal.	4/cs



FOAMING CLEANER/DEGREASER

Multi-purpose cleaner/degreaser that produces a rich foam with a normal trigger sprayer. Safe for most washable surfaces. Foam remains on vertical surfaces until it wets, penetrates, and dissolve soils, for easy wipe away.

Fragrance: Citrus

Color: Light Green

Dilution: RTU

pH Range: 11.5-12.0

Item #	Description	Pack
10079761	1 qt.	12/cs



AMMONIATED GLASS CLEANER

Easy-to-use cleaner/polish uses clinging foam to break up and hold soils, even on vertical surfaces. Formulated with ammonia to leave glass surfaces "squeaky" clean.

Fragrance: Characteristic

Color: Clear

Dilution: Aerosol

pH Range: 10-11

Item #	Description	Pack
10079747	16 oz.	12/cs



FURNITURE POLISH

Dust as you polish. Leaves a dust free surface. For light and dark furniture, plastic counters and table tops, ceramic and plastic tile, leather articles, chrome, stainless steel, porcelain, brass, marble, vinyl and enamel surfaces.

Fragrance: Lemon

Color: White

Dilution: Aerosol

pH Range: 9.87-10.87

Item #	Description	Pack
10079774	20 oz.	12/cs



AMMONIATED GLASS CLEANER

Multi-purpose ammoniated cleaner for glass, mirrors, desk tops, chalkboards, tile, chrome, stainless steel and hard surfaces. Dries quickly, without streaking/filming. Dustless, wax-free and ready for all weather.

Fragrance: Bouquet

Color: Light Blue

Dilution: RTU

pH Range: 10.0-10.5

Item #	Description	Pack
10079764	1 qt.	12/cs
10079765	1 gal.	4/cs



GRAFFITI REMOVER

Gel graffiti remover clings to vertical surfaces to remove crayon, ink, spray paint, waxes, tape marks, scuff marks and lipstick. Use on lockers, trash bins, street signs, commercial vehicles, public restrooms, brick walls.

Fragrance: Solvent

Color: Tan

Dilution: Aerosol

pH Range: 12.42-13.42

Item #	Description	Pack
10079993	20 oz.	12/cs



BLUE NON-BUTYL ALL PURPOSE CLEANER

Use this product all types of soils. It is safe on most washable surfaces. This versatile cleaner removes grease, oil, grime, dirt, soap scum, body oils, hard water stains, and many inks with ease.

Fragrance: Citrus

Color: Dark Blue

Dilution: 1-4 oz./gal.

pH Range: 11.5-12.0

Item #	Description	Pack
10079767	1 gal., Blue	4/cs



H2O STAINLESS STEEL CLEANER

Cleans, polishes, protects stainless steel and chrome w/o hard rubbing or polishing. Resists finger prints, grease and water spatter. Use on window frames, doors, corridor guards, kick plates, dishwashers, refrigerators, etc.

Fragrance: Characteristic

Color: White

Dilution: Aerosol

pH Range: 6.5-7.5

Item #	Description	Pack
10079999	16 oz.	12/cs



MULTI-PURPOSE CLEANER

Industrial strength foaming glass/general surface cleaner. Use on walls, doors, appliances, mirrors, windows, counters, furniture, etc. Spray on, allow foam to break up dirt and grime for easy removal.



Fragrance: Solvent **Color:** Pale Yellow
Dilution: Aerosol **pH Range:** 9-10
Item # **Description** **Pack**
10079989 16 oz. 12/cs

MULTI-PURPOSE RTU CLEANER/DEGREASER

Multi-purpose, ready-to-use cleaner/degreaser. Cleans fiberglass, tubs, bathrooms, carpets, mildew stains, soap scum, kitchens, engines, white sidewall tires, filters, vinyl tops, seats and floor mats.



Fragrance: Lemon **Color:** Yellow
Dilution: RTU **pH Range:** 12.0-12.5
Item # **Description** **Pack**
10079759 1 qt. 12/cs
10079760 1 gal. 4/cs

NON-AMMONIATED GLASS CLEANER

Concentrated, blue liquid glass cleaner when diluted. Used for windows, mirrors, windshield, desktops, tile and a variety of other surfaces. No dull finish and contains no ammonia.



Fragrance: Floral **Color:** Dark Blue
Dilution: 1 qt./5 gal. **pH Range:** 11.5-12.0
Item # **Description** **Pack**
10079855 1 qt. 6/cs
10079856 1 gal. 4/cs

PEROXY 2-N-1 CLEANER/DEGREASER

D'Limonene-based cleaner/degreaser. Used for cleaning tasks when a strong solvent is required. Great for tar. Fast and effective this product is powerful, ripping through even the toughest glues, resins, and mastics.



Fragrance: Citrus **Color:** Orange
Dilution: RTU or 5-64 oz./gal. **pH Range:** n/a
Item # **Description** **Pack**
10079792 1 qt. 12/cs

WASP & HORNET SPRAY

Jet stream up to 20 feet. Kills wasps, hornets, and yellow jackets on contact. Continues with a residual. Use this product indoors and outdoors.



Fragrance: Characteristic **Color:** White Foam
Dilution: Aerosol **pH Range:** n/a
Item # **Description** **Pack**
10079994 16 oz. 12/cs

20% FLOOR FINISH GREEN

For supermarkets, retail and institutional settings on resilient flooring. Gives ultimate wet look gloss with superb detergent resistance and durability. Recommended product for high maintenance floors.



Fragrance: None
Dilution: RTU
Item # **Description** **Pack**
 10079893 5 gal. 1/pail



AIR & FABRIC FRESHENER

Approved by DfE (Design for the Environment). Developed with environmentally preferable products. Safely eliminates pet, smoke, cooking, and musty odors on virtually all fabrics, carpet and upholstery.



Fragrance: Clean
Dilution: RTU
Item # **Description** **Pack**
 10079898 1 gal. 4/cs



ALL PURPOSE CLEANER

EcoLogo® Certified Hard Surface Cleaner CCD-146. No fragrances, glycol ethers, phosphates, flammable or corrosive ingredients. Concentrated all purpose cleaner quickly penetrates and loosens light soils.



Fragrance: None
Dilution: 1-4 oz./gal.
Item # **Description** **Pack**
 10079882 1 gal. 4/cs



DAILY FLOOR MOP CLEANER GREEN

Rinse free neutral damp mop concentrate saves time and labor costs in daily floor maintenance.



Fragrance: Tangy Fruit
Dilution: 1/4-1 1/2 oz./gal.
Item # **Description** **Pack**
 10079894 5 gal. 1/pail



FLOOR FINISH STRIPPER

A blend of biodegradable surfactants and environmentally preferable solvents that completely loosens and removes metal-free floor finishes with minimal scrubbing.



Fragrance: None
Dilution: 13-32 oz./gal.
Item # **Description** **Pack**
 10079892 1 gal. 4/cs
 10081172 5 gal. 1/pail



FOAMING SHOWER CLEANER

Environmentally preferable ingredients are non-corrosive to skin, effective on mineral soils. Mild acid removes soap scum, hard water deposits and rust stains from tubs, toilets, sinks, showers, tile, grout, drinking fountains and other acid resistant surfaces.



Fragrance: Pleasant
Dilution: RTU
Item # **Description** **Pack**
 10079890 1 qt. 12/cs



NON-SOLVENT DEGREASER

EcoLogo® Certified. Concentrated non-solvent degreaser, penetrates and removes soils. No fragrances, glycol ethers, chlorinated solvents, petroleum solvents, phosphates, flammable or corrosive ingredients.



Fragrance: None
Dilution: 1-4 oz./gal.
Item # **Description** **Pack**
 10079884 1 gal. 4/cs



OXY NATURAL CLEANER

EcoLogo® Certified Hard Surface Cleaner CCD-146. A powerful blend of environmentally preferable, biodegradable neutral cleaner. Contains no alcohols or phosphates. Great for most hard and soft surfaces.



Fragrance: Orange
Dilution: 1/2 to 10 oz./gal.
Item # **Description** **Pack**
 10079896 1 gal. 4/cs



SPRAY & WIPE

Fortified with natural orange citrus solvent (d-limonene). Removes dirty hand prints from walls and doors, scuff marks from floors, bathtub rings, soot, grease, smoke film, dust, lipstick and crayon marks.



Fragrance: Fruity
Dilution: RTU
Item # **Description** **Pack**
 10079889 1 qt. 12/cs



VOC FREE GLASS CLEANER

Concentrated, blue liquid glass cleaner when diluted. Used for windows, mirrors, windshield, desktops, tile and a variety of other surfaces. No dull finish and contains no ammonia.



Fragrance: None
Dilution: 4 oz./gal.
Item # **Description** **Pack**
 10079886 1 gal. 4/cs



ANTIBACTERIAL ECONOMY HAND SOAP

This soap is formulated with Triclosan. Normal hand washing with this cleanser will leave hands clean and soft.

Fragrance: Cherry Vanilla
Dilution: RTU
Item # **Description**
10079871 1 gal.

Color: Clear Amber
pH Range: 9.5-10.0
Pack
4/cs



PUMICE HAND SOAP

Pleasantly scented, heavy-duty hand cleaner designed to remove carbon black, grease, grime, ink, and other hard-to-remove soils.

Fragrance: Cherry
Dilution: RTU
Item # **Description**
10079718 1 gal., Pink
10079719 1 gal. Flat Top, Pink
10079724 55 gal., Pink

Color: White
pH Range: 8.5-9.0
Pack
4/cs
4/cs
1/drum



FOAMING HAND SOAP

Pleasantly scented, ready-to-use skin cleanser formulated to remove a wide range of soils.

Fragrance: Clean
Dilution: RTU
Item # **Description**
10079872 1 gal.

Color: Blue
pH Range: 8.0-8.5
Pack
4/cs



PINK PEARLIZED HAND SOAP

Creates a thick, rich lather with a unique emollient system to ensure mildness for the skin.

Fragrance: Herbal Mint
Dilution: RTU
Item # **Description**
10079716 1 gal., Pink
10079717 55 gal., Pink

Color: Pink Pearlized
pH Range: 6.0-6.5
Pack
4/cs
1/drum



HAND & BODY SHAMPOO

Body shampoo containing special moisturizers, conditioners and aloe vera gel to ensure hair and skin retain body and manageability.

Fragrance: Herbal
Dilution: RTU
Item # **Description**
10079714 1 gal.

Color: Red
pH Range: 6.5-7.0
Pack
4/cs



PINK LOTION HAND SOAP

Rich, pearlized pink lotion soap formulated for extra value. Gentle cleansing with a clean rinse. Pleasant, light floral fragrance.

Fragrance: Floral
Dilution: RTU
Item # **Description**
10080000 800 mL, Pink

Color: Pink
pH Range: 4.8-6.2
Pack
12/cs



PEARLIZED ANTI-BACTERIAL HAND SOAP

Thick pearlescent hand soap. Effectively removes bacteria with normal use. Effective against MRSA, VRE and Staph.

Fragrance: Melon
Dilution: RTU
Item # **Description**
10079725 1 gal., White

Color: Pearlized White
pH Range: 6.5-7.0
Pack
4/cs





Certified Hand Cleaners
Institutional CCD-104

- This product meets the EcoLogo® standard for institutional hand cleaners based on its reduced human and aquatic toxicity and reduced smog production potential.

RADIANCE TOUCH FREE DISPENSERS

**LTX 1200 CHROME/BLACK
FOAM SOAP DISPENSER**

Item # **Description**
10102612 1200 mL, Chrome/Black



LTX 1200 FOAM DISPENSERS

Item # **Description**
10084400 1200 mL, Dark Gray
10084402 1200 mL, Black



RADIANCE TOUCH FREE SYSTEM SOAPS

● **MILD FOAM HANDWASH**

Item # **Description**
10084396 1200 mL



● **POMEBERRY FOAM
HANDWASH**

Item # **Description**
10084397 1200 mL



**ANTIBACTERIAL PLUM
FOAM HANDWASH**

Item # **Description**
10084399 1200 mL



RADIANCE MANUAL DISPENSERS & SYSTEM SOAPS



**ADX 1250 FOAM
DISPENSERS**

Item #
10084393
Description
1250 mL, Black



**ADX 1250
FOAM
DISPENSERS**

Item #
10084407
Description
1250 mL, Dark
Gray/White



**ADX 1250 FOAM
DISPENSERS**

Item #
10102613
Description
1250 mL, Brushed
Chrome/Black

RADIANCE MANUAL SYSTEM SOAPS

● **MILD FOAM
HANDWASH**

Item #
10084379
Description
1250 mL



● **BOTANICAL FOAM
HANDWASH**

Item #
10084390
Description
1250 mL



**CITRUS GINGER
SHOWERWASH**

Item #
10084404
Description
1250 mL



**ANTIBACTERIAL PLUM
FOAM HANDWASH**

Item #
10084391
Description
1250 mL



RADIANCE COUNTER MOUNT DISPENSERS

**TOUCH FREE COUNTER
MOUNT DISPENSER**

Item # **Description**
10084862 Chrome



**MANUAL COUNTER
MOUNT DISPENSER**

Item # **Description**
10084863 Chrome



RADIANCE COUNTER MOUNT SOAPS

● **FOAM HAND
CLEANER**

Item # **Description**
10084860 1½ L



**PINK FOAM
HAND CLEANER**

Item # **Description**
10084858 1½ L, Pink



**ANTIBACTERIAL FOAM
HAND CLEANER**

Item # **Description**
10084859 1½ L



CONCENTRATED ALL PURPOSE DEGREASER

Butyl-based concentrate. Properties of a solvent cleaner in a water-based degreaser. Low foaming qualities ideal for automatic scrubbers. May be sprayed or mopped on grease, wax, gum, oil, ink, mold and mildew.

Fragrance: Sassafras **Color:** Dark Green
Dilution: 1-11.5 oz./gal. **pH Range:** 12.5-13.0

Item #	Description	Pack
10079787	1 gal.	4/cs
10079786	5 gal.	1/pail
10079788	55 gal.	1/drum



NON-BUTYL DEGREASER EMULSIFIER

Non-butyl cleaning/degreasing concentrate used in most cleaning applications. It contains no harmful solvents and can be used on virtually all surfaces not harmed by water.

Fragrance: None **Color:** Green
Dilution: 1-32 oz./gal. **pH Range:** 13.0-13.5

Item #	Description	Pack
10079773	1 qt.	12/cs
10079782	1 gal.	4/cs
10079772	5 gal.	1/pail
10079783	55 gal.	1/drum



D'LIMONENE CLEANER/DEGREASER

D'Limonene-based cleaner/degreaser. Used for cleaning tasks when a strong solvent is required. Great for tar. Fast and effective, this product is powerful, ripping through even the toughest glues, resins, and mastics.

Fragrance: Citrus **Color:** Orange
Dilution: RTU or 5-64 oz./gal. **pH Range:** n/a

Item #	Description	Pack
10079790	1 qt.	12/cs
10079791	1 gal.	4/cs
10079789	5 gal.	1/pail



PENN LUBE 961

Spray locks, hinges, any moving parts that have become stationary due to corrosion.

Fragrance: Pine/Petroleum **Color:** Light Brown
Dilution: Aerosol **pH Range:** n/a

Item #	Description	Pack
10079995	20 oz.	12/cs



HD ALL PURPOSE WEB ADHESIVE

Web adhesive for temporary/permanent bonding applications. Bonds many like/unlike substrates such as wood, plastic, cloth polyethylene sheeting, foam, carpeting and upholstery. Quick, initial tack.

Fragrance: Solvent **Color:** Amber
Dilution: Aerosol **pH Range:** n/a

Item #	Description	Pack
10079996	20 oz.	12/cs



SOLVENT CITRUS CLEANER/DEGREASER

Powerful cleaner/degreaser designed for tough industrial cleaning applications. Formulated with d'Limonene, it provides deep penetrating action and soil removal.

Fragrance: Orange **Color:** Orange
Dilution: 1-32 oz./gal. **pH Range:** 13.0-13.5

Item #	Description	Pack
10079771	1 gal., Citrus	4/cs
10079770	5 gal., Citrus	1/pail



MULTI-PURPOSE CLEANER/DEGREASER BUTYL CLEANER

Butyl-based cleaner/degreaser concentrate. Removes oily soils from any washable surface. Ideal when rinsing is not feasible. It is low foaming for use in automatic floor scrubbers. Soft metal safe for use as a coil cleaner.

Fragrance: Sassafras **Color:** Purple
Dilution: 1-32 oz./gal. **pH Range:** 12.5-13.0

Item #	Description	Pack
10079784	1 gal.	4/cs
10079961	5 gal.	1/pail
10079785	55 gal.	1/drum



6# SOLID LAUNDRY DETERGENT

Industrial laundry detergent.



Fragrance: Fresh **Color:** Blue
Dilution: 1 oz./60 lb. Fab **pH Range:** 11.5-12.0
Item # **Description** **Pack**
10090795 6# 4/cs

ALL FABRIC BLEACH

Oxygen bleaching agents for use on colored/ synthetic fabrics. Hot solutions (160° F +) provide best bleaching results, but may be used in all temperatures. May be added to laundry during the filling operation or during bleach operation.



Fragrance: None **Color:** Colorless
Dilution: 1.5-3 oz./50 lb. Fab **pH Range:** 5.0-5.5
Item # **Description** **Pack**
10085204 5 gal. 1/pail

LAUNDRY DESTAINER

Economical, chlorine releasing bleach with effective stain removing properties which can be dispensed automatically. Highly miscible in water.



Fragrance: Chlorine **Color:** Straw
Dilution: .75-1.5 oz./50 lb. Fab **pH Range:** 12-12.5
Item # **Description** **Pack**
10084389 5 gal. 1/pail

LEMON LAUNDRY DETERGENT

Perfect for use in various manually dispensed laundry systems, it assists in removing tough ground in soils. Conditions hard water.



Fragrance: Lemon **Color:** White
Dilution: 4-8 oz./50 lb. Fab **pH Range:** 10.8-11.25
Item # **Description** **Pack**
10085141 50# Box 1/box

LIQUID LAUNDRY DETERGENT

Blend of synthetic surfactants quickly and effectively lifts/suspends soils. Provides superior performance in many water conditions, leaves no alkaline residue. Dispensed through automatic equipment or hand measured.



Fragrance: Fresh **Color:** Blue
Dilution: 1-4 oz./50 lb. Fab **pH Range:** 8.0-8.5
Item # **Description** **Pack**
10084011 5 gal. 1/pail

POWDERED LAUNDRY DETERGENT

Perfect for use in various manually dispensed laundry systems, it assists in removing tough ground in soils. Conditions hard water.



Fragrance: None **Color:** White to Brown
Dilution: 3.5 oz./50 lb. Fab **pH Range:** 12.5-13.0
Item # **Description** **Pack**
10088452 50 lb 1/box

RECLAIM LAUNDRY DETERGENT

Industrial laundry detergent powder. Highly alkaline and removes the toughest soils like coffee, tea and protein stains.



Fragrance: Characteristic **Color:** White
Dilution: 1-2 lb./50 lb. Fab **pH Range:** 13.0-13.5
Item # **Description** **Pack**
10094184 50 lb 1/pail

REGULAR LIQUID LAUNDRY DETERGENT

Blend of synthetic surfactants quickly and effectively lifts/suspends soils. Provides superior performance in many water conditions, leaves no alkaline residue. Dispensed through automatic equipment or hand measured.



Fragrance: Fresh **Color:** Blue
Dilution: 1-4 oz./50 lb. Fab **pH Range:** 8.0-8.5
Item # **Description** **Pack**
10088202 55 gal. 1/drum

SUPER LIQUID LAUNDRY BUILDER

Highly alkaline break/builder formulation used in institutional/commercial laundries' automatic liquid dispensing systems. May be used separately as a break or with detergent and is safe on machine washable fabrics.



Fragrance: None **Color:** Clear
Dilution: RTU **pH Range:** 12.0-12.5
Item # **Description** **Pack**
10099590 5 gal. 1/pail

ULTRA SOUR/SOFTENER

Softener and neutralizer that speeds extraction and drying. Brightens white and colored fabrics.



Fragrance: Floral **Color:** Blue
Dilution: 1/2-1 oz./50 lb. Fab **pH Range:** 1.5-2.0
Item # **Description** **Pack**
10091811 5 gal. 1/pail

ACID-FREE DISINFECTANT

Disinfectant, bathroom cleaner, fungicide, mildewstat, virucidal, and deodorizer. Use daily to kill germs and control mold and mildew. Convenient, ready-to-use formula ensures sanitation confidence.

Fragrance: Fresh **Color:** Blue
Dilution: RTU **pH Range:** 11.5-12.0

Item #	Description	Pack
10079731	1 qt.	12/cs



ALL SURFACE BATHROOM CLEANER

Disinfectant, bathroom cleaner, fungicide, mildewstat, virucidal, and deodorizer. Use daily to kill germs and control mold and mildew. Convenient, ready-to-use formula ensures sanitation confidence.

Fragrance: Fresh **Color:** Blue
Dilution: RTU **pH Range:** 11.5-12.0

Item #	Description	Pack
10079735	1 qt.	12/cs



CHLORINATED STAIN REMOVER

Highly effective stain remover. Pleasantly scented, it leaves surfaces clean and fresh smelling. Safer than bleach, it can be used anywhere mold and mildew stains are present. Easy, ready to use makes short work of tough cleaning.

Fragrance: Clean **Color:** Straw
Dilution: RTU **pH Range:** 12.5-13.0

Item #	Description	Pack
10079738	1 qt.	12/cs



CLINGING BOWL CLEANER 9% HCL ACID

Removes scale, rust, algae, and calcium deposits from bathtubs, wash basins and swimming pools. Cleans urinals quickly and safely, gives off no odors or fumes and is harmless to septic tanks when used as directed.

Fragrance: None **Color:** Dark Blue
Dilution: RTU **pH Range:** 1.0

Item #	Description	Pack
10079726	1 qt.	12/cs



DISINFECTING ACID BOWL CLEANER

Cleans, disinfects and deodorizes toilet bowls and urinals, preventing odors caused by microorganisms. Harmless to septic tanks when used as directed.

Fragrance: Characteristic **Color:** White
Dilution: RTU **pH Range:** 1.0

Item #	Description	Pack
10079728	1 qt.	12/cs



HCL DISINFECTANT BOWL CLEANER

Disinfectant bathroom bowl/urinal cleaner designed for hospital, industrial and schools. Acid compatible detergent, removes resistant stains and increases disinfectant action. Cleans, disinfects and deodorizes.

Fragrance: Slight Sassafras **Color:** Milky Green
Dilution: RTU **pH Range:** 1.0

Item #	Description	Pack
10079727	1 qt.	12/cs



LIVE BACTERIA & ENZYME ODOR REMOVER

Enzyme designed to attack odor-causing organic soils and controls odors by removing their source. Leaves fresh scent. Great for odors caused by urine, feces, vomit, and other organic wastes.

Fragrance: Citrus Floral **Color:** Opaque Purple
Dilution: RTU or 64 oz./gal. **pH Range:** 7.0-7.5

Item #	Description	Pack
10079793	1 qt.	12/cs
10079794	1 gal.	4/cs



NON-ACID CREME CLEANSER

Mildly abrasive creme cleanser designed for the fast and efficient removal of a wide variety of soils from virtually all scrubable surfaces. A pleasant fragrance and cleaning power make it perfect for cleaning sinks.

Fragrance: Baby Powder **Color:** White
Dilution: RTU **pH Range:** 9.0-9.5

Item #	Description	Pack
10079734	1 qt.	12/cs



PHOSPHORIC BOWL CLEANER 20% ACID

Thick, clinging formula for prolonged contact time on vertical surfaces. Cleans organic soils and mineral deposits. Keeps fixtures sparkling and deodorizes. Non-injurious to most metals, porcelain, tile and enamel.

Fragrance: Cherry **Color:** Pink
Dilution: RTU **pH Range:** 1.0

Item #	Description	Pack
10079729	1 qt.	12/cs





SMART SHIFT:

FOR A DEEPER, MORE CONSISTENT CLEAN

Smart Shifts are meaningful steps taken to bring about measurable improvements to productivity, training, efficiency and effectiveness. At Pollock, we offer Smart Shift Solutions to ensure your restrooms provide a clean, consistency experience.

CLEAN RESTROOMS MATTER

Dirty restrooms can seriously impact the reputation of your business. In fact, **73 percent of consumers** believe a bad restroom experience indicates poor management and **69 percent say it** lowers their opinion of the entire company.*

For consistently clean restrooms you need:

- Rigorously disciplined maintenance schedules
- Defined and documented procedures
- Product, procedure and equipment training
- Proper product application

Customers, employees and patrons all expect a clean restroom and they notice when maintenance falls short. It takes the right products and procedures to maintain a clean restroom, and Pollock can help.

4 SMART SHIFTS FOR A CONSISTENT CLEAN

Pollock has helped many customers make a big impact in restroom cleanliness and their bottom line with Smart Shift Solutions that get results including:

- **Define** training and maintenance practices with standards and schedules that drive consistency
- **Go** hands-free to curb the spread of germs, cut down on costly repairs and create a more user-friendly restroom with touchless faucets and flushers
- **Upgrade** to the efficiency of roll towels and equipment like auto flushers to reduce labor, waste and repair costs
- **Rethink** your air care strategy to eliminate odors at the source

Pollock can help with services, solutions and products tailored for your workplace. Each of our customers has specific demands. We're here to help you meet those demands with a mix of:

Strategy • Services • Supplies • Equipment

*According to the International Facilities Management Association, <http://www.ifma.org/publications/blog-fmj/article/blog-fmj/2014/02/24/coming-clean-restrooms-impact-perception-of-facility-condition>

SMART SPRAY ALL PURPOSE CLEANER

Certified to Hard Surface Cleaner CCD-146. No fragrances, glycol ethers, phosphates, flammable or corrosive ingredients. Quickly penetrates/ loosens light soils from water washable surfaces.



Fragrance: None

Dilution: RTU

Item # **Description**
10091137 11 oz.

Color: Pink
pH Range: 10.5-11.0

Pack
6/cs



SMART SPRAY VOC FREE GLASS CLEANER

Certified to CCD-146A. Contains no ammonia, solvents, fragrances, or other volatile organic compounds. A cleaning solution for windows, metal, plastic, fiberglass and other hard surfaces. Removes dirt, dust, fingerprints and other light soils.



Fragrance: None

Dilution: 4 oz./gal.

Item # **Description**
10091135 11 oz.

Color: Dark Blue

pH Range: 7.5-8.0

Pack
6/cs



SMART SPRAY BATH & BOWL CLEANER

Environmentally preferred bath cleaner concentrate for industrial use.



Fragrance: None

Dilution: 6 oz./gal.

Item # **Description**
10091118 11 oz.

Color: Yellow
pH Range: 0.5-1.0

Pack
6/cs



SMART SPRAY WATER BOTTLE

Smart spray water bottle.



Item # **Description** **Pack**
10091112 11 oz. 1/ea

SMART SPRAY DEGREASER

EcoLogo® Certified. Concentrated non-solvent degreaser, penetrates and removes soils. No fragrances, glycol ethers, chlorinated solvents, petroleum solvents, phosphates, flammable or corrosive ingredients.



Fragrance: None

Dilution: 4 oz./gal.

Item # **Description**
10091136 11 oz.

Color: Green
pH Range: 10.5-11

Pack
6/cs



SMART SPRAYER W/WATER BOTTLE

Smart sprayer with 1 water bottle.



Item # **Description** **Pack**
10091089 12 oz. 1/ea



BACTERIAL DIGESTANT

Safe, bioactive blend attacks organic solids such as greases, fats, proteins and carbohydrates, destroying malodors. For grease traps, septic systems, drain lines, refuse containers where organic solids cause malodors.



Fragrance: None **Color:** Red
Dilution: 8 oz./day **pH Range:** 7.0-7.5
Item # Description Pack
 10097990 5 gal. 1/pail

ENCAPSULATED DETERGENT

100% active, chlorinated detergent. Use in automatic dish machines through a "bowl" type dispenser. Do not use on aluminum, pewter or other soft metal alloys. Contains water conditioners, preventing scale accumulation in wash jets, tubing and fittings. Chlorine aids in destaining and protein removal.



Fragrance: Characteristic **Color:** White
Dilution: 0.35 oz./10 gal. **pH Range:** 12.0-12.5
Item # Description Pack
 10079958 8 lb. 1/cs

HIGH TEMPERATURE RINSE ADDITIVE

Liquid concentrate, works with most automatic dispensing equipment and is added to final dishwashing machine rinse water by rinse injector. Formulated for use under a variety of conditions. It reduces surface tension of water so instead of spotting, water runs off leaving dishware dry and clean.



Fragrance: None **Color:** Green
Dilution: 0.5 oz./10gal **pH Range:** 3.0-3.5
Item # Description Pack
 10084891 5 gal. 1/pail

LEMON MANUAL DISH DETERGENT

Lemon scented, manual dishwashing liquid with highly concentrated blend of mild synthetic detergents and powerful grease cutting agents that eliminate hard to remove substances from cooking and eating utensils.



Fragrance: Lemon **Color:** Yellow
Dilution: 1 oz./8 gal. **pH Range:** 8.0-8.5
Item # Description Pack
 10079847 1 gal., Lemon 4/cs

LO-TEMP DETERGENT

For cleaning dishes, utensils and food processing equipment in low temperatures. Controlled alkalinity for effective destaining and protein soil removal. Keeps wash jets, tubing and fittings clean and operating.



Fragrance: None **Color:** Red
Dilution: 1/4-1/2 oz./gal. **pH Range:** 13.5-14.0
Item # Description Pack
 10079960 1 gal. 4/cs
 10079955 5 gal. 1/pail

LO-TEMP RINSE AID

Perfect in low temp automatic dishwashers. Sheetting action protects glasses and dishes from spots and stains. Liquid concentrate added by rinse injector in final rinse water in low temperature dishwasher. Works with most automatic dispensing equipment.



Fragrance: None **Color:** Blue
Dilution: 1/2 oz./10 gal. **pH Range:** 7.5-8.0
Item # Description Pack
 10079959 1 gal. 4/cs
 10079956 5 gal. 1/pail

ORANGE DELIMER

All purpose lime remover effective in the removing of lime, scale and other mineral deposits such as iron associated with hard water.



Fragrance: None **Color:** Orange
Dilution: 0.25-4 oz./gal. **pH Range:** <1.0
Item # Description Pack
 10079957 55 gal. 1/drum

PINK MANUAL DISH DETERGENT

Concentrated synthetic detergents, water conditioners, grease emulsifiers cut grease, dried-on-food and hard to remove substances from pots, pans and dishes. Spot-free cleaning reduces hand drying. Mild to skin.



Fragrance: Herbal **Color:** Pink
Dilution: 1 oz./4 gal. **pH Range:** 7.5-8.0
Item # Description Pack
 10079846 1 gal. 4/cs
 10086004 5 gal. 1/pail

SILVER PRESOAK

Odorless, blue concentrate loosens tough "stuck-on" soils from flatware and utensils. Eliminates rejection rate for treated items. Takes all the work out of detarnishing silver and never allows loss of silver by removing only the sulfur portion of tarnish.



Fragrance: None **Color:** Light Blue
Dilution: 1 oz./gal. **pH Range:** 11.5-12.0
Item # Description Pack
 10079976 8 lb. 4/cs

CENTERPULL TOWELS

Towel dispenses fully open and ready to use. Great for hand drying or for medium duty kitchen tasks in high-traffic food service, food processing, maintenance, general manufacturing and healthcare facilities.



Item #	Description	Pack
10092285	8" x 600', White	6/cs

MULTIFOLD TOWELS

Designed to fit into a wide range of dispensers. Ideal for facilities such as government and public buildings, office buildings, lodging and restaurants.



Item #	Description	Pack
10092281	9" x 9 1/2", White	4000/cs

ROLL TOWELS

Fits into a wide range of universal hardwound roll towel dispensers. Great for high traffic washrooms.



Item #	Description	Pack
10092283	8" x 800', White	6/cs

JUMBO JRT JR TOILET TISSUE

Delivers the appearance and softness of at-home tissue. Great for hospitality properties, restaurants and upscale office buildings.



Item #	Description	Pack
10092284	3.3" x 850', 2-Ply	12/cs

TOILET TISSUE

Delivers the appearance and softness of at-home tissue. Great for hospitality properties, restaurants and upscale office buildings.



Item #	Description	Pack
10092282	500 ct., 4 1/4" x 3 3/4"	80/cs

HIGH DENSITY CAN LINERS

Used for paper and non-rough objects under moderate transport conditions. These bags are very strong and handle higher load capacities than LLD bags, but tear easier once punctured. Ideal for paper plates, towels, office, grass, rags, and smooth, heavy objects.



Item #	Description	Pack
Multiple	Various Sizes S, M, L	Roll/Flat

LOW DENSITY CAN LINERS

Used for rough or sharp objects under tough transport conditions. These bags are very strong and are more resistant to tearing, but handle lower load capacity than Hi-D bags. Ideal for sticks, rough yard trimmings, glass, plastic utensils and metal with sharp edges.



Item #	Description	Pack
Multiple	Various Sizes S, M, L	Roll/Flat

LOBBY BROOM

Great for use with lobby dust pans. Plastic handle with hang-up hole. Angled plastic broom, frayed bristle construction. Will not absorb water.



Item #	Description	Pack
10097205	Black	1/ea

LOBBY DUST PAN

Easy lock two-way handle can lock in the upright position. Innovative foot rest pads. Enhanced angle bottom. Increased tray capacity.



Item #	Description	Pack
10097204	Black	1/ea

THIN BIN CONTAINERS

High capacity container for tight places. Convenient ergonomic handles with recessed hand grips molded into bottom. Smooth inside surface for easy cleaning.



Item #	Description	Pack
10097208	23 gal., Gray	1/ea
10097214	23 gal., Beige	1/ea

GATOR CONTAINERS

Molded with highest quality polyethylene resin. Built-in Gator poly bag cinches. Deeper, wider bottom hand grip pockets slot for easier dumping.



Item #	Description	Pack
10097210	32 gal., Gray	1/ea
10097211	44 gal., Gray	1/ea

RECTANGULAR WASTEBASKET

Bag pinch secures poly liners. Molded of high quality polyethylene for strength and durability. Seamless soft-sided construction will not dent, leak or rust. Rolled rim for easy pick-up and delivery.



Item #	Description	Pack
10097209	28 qt., Black	1/ea

GATOR CONTAINER LID

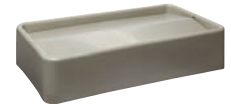
Molded with highest quality polyethylene resin. One piece molded construction creates high impact and crush resistance. With lid locked, container is animal and spill resistant even if tipped over.



Item #	Description	Pack
10097929	Fits 32 gal., Gray	1/ea

THIN BIN LID

Lid for thin bin container.



Item #	Description	Pack
10097928	Fits 23 gal., Beige	1/ea
10097950	Fits 23 gal., Gray	1/ea

SIDE PRESSURE COMBO MOP BUCKET

Splash guard water vents eliminate squirting, splashing. Structural foam polyethylene wringer and bucket for durability and corrosion resistance.



Item #	Description	Pack
10097213	26-35 qt., Yellow	1/ea

WET FLOOR SIGN

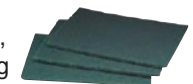
Highly visible sign for areas needing to be marked off. Folds flat for space saving storage. Ridged pattern on feet minimizes contact with floors.



Item #	Description	Pack
10097212	English/Spanish, Yellow	1/ea

SCOURING PADS

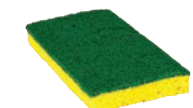
For most common cleaning jobs. Cleans pots, pans and kitchen equipment. Ideal for building interiors, including floors, stairways and baseboards. 6" x 9".



Item #	Description	Pack
10098756	General Purpose, Green	10/pack
10099054	Light Duty, White	20/cs
10099075	Medium Duty, Green	20/cs
10112640	Heavy Duty, Green	15/cs

MEDIUM DUTY SCRUB SPONGE BULK

Item #	Description	Pack
10099078	Green/Yellow	20/cs



1500 RPM BURNISHER

Best value in the industry with high productivity rate backed by most extensive warranty. Flexible pad driver included.



Item #	Description	Pack
10107647	50' Cord, 68 dB, 20" Path, 1.5 hp, 110V	1/ea

FLOOR MACHINE WITH PAD DRIVER

Easy to use fingertip controls with safety lock-out switch. Designed for daily, heavy-duty use. All steel, triple planetary gear box and a 5 year warranty on housing and motor.



Item #	Description	Pack
10107098	50' Cord, 63 dB, 20", 1.5 HP, 110V	1/ea

SELF-CONTAINED CARPET CLEANING EXTRACTOR

Best value in the industry. Wide 16" cleaning path and 10 gallon tank increase cleaning productivity. Backed by most extensive, hassle-free warranty in the business.



Item #	Description	Pack
10108254	10 gal., 16" Path, 100 PSI	1/ea

WET/DRY VACUUM CLEANER

9' vacuum hose and 5-piece complete contractor tool kit with crevice tool, dusting brush, wet/dry pick-up tools and 3-piece stainless steel wand.



Item #	Description	Pack
10107099	50' Cord, 18 gal., 39" x 18.5" x 41.5", 24" Path, 1.17 hp	1/ea

HYBRID HAND WRAP FILM

45 gauge hybrid hand wrap stretch film. The ultimate blown hand wrap. A combination of load containment, toughness, stiffness and cling.



Item #	Description	Pack
10108912	12.8" x 1500'	4/cs

PREMIUM HAND FILM

80 gauge premium blown two side cling hand wrap stretch film. Versatile, lightweight, unparalleled puncture tear resistance. Stretch, toughness ensures enhanced protections for regular loads, extra protection for hard-to-hold loads.



Item #	Description	Pack
10089476	18" x 1500'	4/cs

PRE-STRETCHED HAND FILM

Blown two side cling pre-stretched hand wrap stretch film. Light weight, easy handling, eliminates roll damage. Faster application speed, less strain on labor force.

Item #	Description	Pack
10089582	15" x 2000'	1/roll

MACHINE STRETCH FILM

One side cling, machine length stretch film. Improved force load. Exceptional puncture resistance.



Item #	Description	Pack
10089475	20" x 6000', 63 Gauge	1/roll
10089550	20" x 6000', 70 Gauge	1/roll
10089551	20" x 5000', 90 Gauge	1/roll
10089552	20" x 5500', 80 Gauge	1/roll
10111724	20" x 6500', 70 Gauge	1/roll

CARTON TAPE

1.8 mil clear carton tape. Polypropylene/synthetic rubber. Works well in hand dispensers.



Item #	Description	Pack
10117160	48mm x 100M, Clear	36/cs
10117161	72mm x 100M, Clear	24/cs



**RADIANCE CAN TAKE YOU PLACES.
GETTING YOU CLOSER TO THE TRIP OF A LIFETIME.**

JOIN PRESIDENT'S CLUB FOR A CHANCE TO WIN A TRIP FOR TWO TO PARADISE

Turn solutions for your business into the trip of a lifetime with Pollock's annual President's Club. Earn bonus points for every dollar you spend on Radiance products. Meet your growth goal and collect the most points by the end of the year and you could win a vacation for two in paradise.

- **Learn more and fill out an enrollment form at www.pollock.com/presidents-club**

All Pollock customers in good standing during the promotion and at the time of the trip are eligible to participate

- **Strategic Supplier Catalog**

View all Suppliers and Products that earn bonus points at www.pollock.com/presidents-club



#1 GLASS & MULTI-SURFACE CLEANER.....	7	EXTRACTION CLEANER.....	5	NON-BUTYL DEGREASER EMULSIFIER.....	21
#2 ALL PURPOSE CLEANER.....	7	FLOOR FINISH STRIPPER.....	18	NON-SOLVENT DEGREASER.....	18
#3 HEAVY DUTY MULTI-PURPOSE DEGREASER.....	7	FLOOR MACHINE WITH PAD DRIVER.....	29	OCEAN BREEZE SCENT ODOR NEUTRALIZER.....	4
#4 MULTI-PURPOSE ENZYME DIGESTER.....	7	FLOOR PRODUCT SELECTOR GUIDE.....	14	OIL BASED 40% URETHANE FINISH.....	11
#5 GREEN ECOLOGO® CERTIFIED ALL PURPOSE CLEANER.....	7	FOAM HAND CLEANER.....	20	OIL-BASED DUST MOP TREATMENT.....	12
#6 NON-SOLVENT DEGREASER.....	7	FOAMING CLEANER/DEGREASER.....	16	ORANGE DELIMER.....	26
#7 VOC FREE GLASS CLEANER.....	7	FOAMING HAND SOAP.....	19	OVEN & GRILL CLEANER.....	15
#8 BATH & BOWL CLEANER.....	7	FOAMING MULTI-PURPOSE DISINFECTANT CLEANER.....	9	OXY NATURAL CLEANER.....	18
#9 TROPICAL SCENT ODOR NEUTRALIZER.....	7	FOAMING SHOWER CLEANER.....	18	PEARLIZED ANTI-BACTERIAL HAND SOAP.....	19
#10 DAILY FLOOR MOP CLEANER.....	7	FOOD SERVICE SANITIZER.....	15	PENN LUBE 961.....	21
#11 OXY NATURAL DEGREASER.....	8	FREEZER CLEANER.....	15	PEROXY 2-N-1 CLEANER/DEGREASER.....	17
#12 CONCENTRATED FLOOR MAINTAINER.....	8	FRESH SCENT NEUTRAL DISINFECTANT.....	9	PHOSPHORIC BOWL CLEANER 20% ACID.....	23
#14 EXTRACTION CLEANER.....	8	FRESH SCENT ODOR NEUTRALIZER.....	4	PINE SCENT NEUTRAL DISINFECTANT.....	9
#16 NON-ACID BATHROOM DISINFECTANT.....	8	FURNITURE POLISH.....	16	PINK FOAM HAND CLEANER.....	20
#17 256 HI-Q NEUTRAL DISINFECTANT.....	8	GATOR CONTAINER LID.....	28	PINK LOTION HAND SOAP.....	19
#21 FRESH SCENT NEUTRAL DISINFECTANT.....	8	GATOR CONTAINERS.....	28	PINK MANUAL DISH DETERGENT.....	26
#22 ONE STEP ALL PURPOSE DISINFECTANT CLEANER.....	8	GEL CARPET SPOTTER.....	5	PINK PEARLIZED HAND SOAP.....	19
#23 FOOD SERVICE SANITIZER.....	8	GERMICIDAL SPRAY CLEANER.....	9	POMEBERRY FOAM HANDWASH.....	20
#35 PEROXIDE DISINFECTANT CLEANER.....	8	GRAFFITI REMOVER.....	16	POWDERED LAUNDRY DETERGENT.....	22
#36 LAVENDER ALL PURPOSE CLEANER.....	8	GREEN SCRUBBING FLOOR PADS.....	13	PREMIUM HAND FILM.....	29
6# SOLID LAUNDRY DETERGENT.....	22	GUM REMOVER.....	5	PRE-STRETCHED HAND FILM.....	29
20% FLOOR FINISH GREEN.....	18	H2O STAINLESS STEEL CLEANER.....	16	PUMICE HAND SOAP.....	19
1500 RPM BURNISHER.....	29	HAND & BODY SHAMPOO.....	19	QUARRY TILE CLEANER.....	15
ACID-FREE DISINFECTANT.....	23	HARD SURFACE SANITIZER.....	9	RECLAIM LAUNDRY DETERGENT.....	22
ACIDIC DAMP MOP CLEANER.....	12	HCL DISINFECTANT BOWL CLEANER.....	23	RECTANGULAR WASTEBASKET.....	28
ACRYLIC FLOOR SEALER/FINISH.....	11	HD ALL PURPOSE WEB ADHESIVE.....	21	RED BUFFING FLOOR PADS.....	13
ACTION FLOOR STRIPPER.....	10	HEAVY DUTY CARPET SPOTTER.....	5	REGULAR LIQUID LAUNDRY DETERGENT.....	22
ADX 1250 FOAM DISPENSERS.....	20	HIGH BEAM 23% FLOOR FINISH.....	11	ROLL TOWELS.....	27
AIR & FABRIC FRESHENER.....	18	HIGH DENSITY CAN LINERS.....	27	SCOURING PADS.....	28
ALCOHOL BASED GLASS CLEANER.....	16	HIGH GLOSS 18% FLOOR FINISH.....	11	SELF-CONTAINED CARPET CLEANING EXTRACTOR.....	29
ALL FABRIC BLEACH.....	22	HIGH GLOSS 20% FLOOR FINISH.....	11	SELF-FOAMING BASEBOARD STRIPPER.....	10
ALL PURPOSE CLEANER.....	18	HIGH GLOSS 22% FLOOR FINISH.....	11	SIDE PRESSURE COMBO MOP BUCKET.....	28
ALL PURPOSE DELIMER.....	15	HIGH GLOSS 25% FLOOR FINISH.....	11	SILICONE EMULSION DEFOAMER.....	5
ALL SURFACE BATHROOM CLEANER.....	23	HIGH PERFORMANCE STRIPPING FLOOR PAD.....	13	SILVER PRESOAK.....	26
AMMONIATED GLASS CLEANER.....	16	HIGH SPEED 25% FLOOR FINISH.....	11	SMART SPRAY ALL PURPOSE CLEANER.....	25
AMMONIATED GLASS CLEANER.....	16	HIGH TEMPERATURE RINSE ADDITIVE.....	26	SMART SPRAY BATH & BOWL CLEANER.....	25
ANTIBACTERIAL ECONOMY HAND SOAP.....	19	HYBRID HAND WRAP FILM.....	29	SMART SPRAY DEGREASER.....	25
ANTIBACTERIAL FOAM HAND CLEANER.....	20	JUMBO JRT JR TOILET TISSUE.....	27	SMART SPRAY VOC FREE GLASS CLEANER.....	25
ANTIBACTERIAL PLUM FOAM HANDWASH.....	20	LAUNDRY DESTAINER.....	22	SMART SPRAY WATER BOTTLE.....	25
ANTIBACTERIAL PLUM FOAM HANDWASH.....	20	LEMON DETERGENT DISINFECTANT.....	9	SMART SPRAYER W/WATER BOTTLE.....	25
AQUA ULTRA HIGH SPEED BURNISHING PAD.....	13	LEMON LAUNDRY DETERGENT.....	22	SMARTDRAW DUO SYSTEM.....	6
BACTERIAL DIGESTANT.....	26	LEMON MANUAL DISH DETERGENT.....	26	SMARTDRAW FLEX FOAM SYSTEM.....	6
BLACK STRIPPING FLOOR PADS.....	13	LEMON SCENT NEUTRAL DISINFECTANT.....	9	SMOKEHOUSE CLEANER.....	15
BLUE CLEANING FLOOR PADS.....	13	LEMON SCENT ODOR NEUTRALIZER.....	4	SOLVENT CITRUS CLEANER/DEGREASER.....	21
BLUE NON-BUTYL ALL PURPOSE CLEANER.....	16	LIQUID LAUNDRY DETERGENT.....	22	SPRAY & WIPE.....	18
BONNET SHAMPOO W/ENZYMES.....	4	LIVE BACTERIA & ENZYME ODOR REMOVER.....	23	SPRAY MAINTAINER.....	12
BOTANICAL FOAM HANDWASH.....	20	LOBBY BROOM.....	28	SUPER FLOOR NO RINSE STRIPPER.....	10
CARPET PRETREATER.....	5	LOBBY DUST PAN.....	28	SUPER HOG HAIR FLOOR PADS.....	13
CARPET SHAMPOO.....	4	LO-TEMP DETERGENT.....	26	SUPER LIQUID LAUNDRY BUILDER.....	22
CARTON TAPE.....	29	LO-TEMP RINSE AID.....	26	SURFACE DISINFECTANT & DEODORIZING AEROSOL.....	9
CENTERPULL TOWELS.....	27	LOW DENSITY CAN LINERS.....	27	THIN BIN CONTAINERS.....	28
CHLORINATED STAIN REMOVER.....	23	LTX 1200 CHROME/BLACK FOAM SOAP DISPENSER.....	20	THIN BIN LID.....	28
CITRUS GINGER SHOWERWASH.....	20	LTX 1200 FOAM DISPENSERS.....	20	TOBACCO ODOR NEUTRALIZER.....	4
CLINGING BOWL CLEANER 9% HCL ACID.....	23	MACHINE STRETCH FILM.....	29	TOILET TISSUE.....	27
CONCENTRATED ALL PURPOSE DEGREASER.....	21	MANUAL COUNTER MOUNT DISPENSER.....	20	TOUCH FREE COUNTER MOUNT DISPENSER.....	20
CONCENTRATED FLOOR MAINTAINER.....	12	MEDIUM DUTY SCRUB SPONGE BULK.....	28	TROPICAL SCENT ODOR NEUTRALIZER.....	4
DAILY FLOOR MOP CLEANER GREEN.....	18	MEGA MOP Q DISINFECTANT.....	9	ULTRA SOUR/SOFTENER.....	22
DEBROWNING RINSE.....	5	MEGA Q 256 NEUTRAL DISINFECTANT.....	9	URINAL SCREEN.....	4
DEEP SCRUB FLOOR CLEANER.....	12	MILD FOAM HANDWASH.....	20	VOC FREE GLASS CLEANER.....	18
DEEP SCRUB FLOOR CLEANER RECOAT.....	12	MILD FOAM HANDWASH.....	20	WASP & HORNET SPRAY.....	17
DEMA EXTREME 4+4 SYSTEM.....	6	MULTIFOLD TOWELS.....	27	WATER BASED ACRYLIC URETHANE SEALER.....	11
DEMA SAFELINK PORTABLE SYSTEM.....	6	MULTI-PURPOSE CLEANER.....	17	WATER BASED CARPET SPOTTER.....	5
DISINFECTING ACID BOWL CLEANER.....	23	MULTI-PURPOSE CLEANER/DEGREASER BUTYL CLEANER.....	21	WATER BASED DUST MOP TREATMENT.....	12
D'LIMONENE CLEANER/DEGREASER.....	21	MULTI-PURPOSE RTU CLEANER/DEGREASER.....	17	WATER BASED WOOD FLOOR CLEANER.....	11
DUAL ACID BLEND LIME REMOVER.....	15	NATURAL TAN HOG HAIR FLOOR PADS.....	13	WET FLOOR SIGN.....	28
ECONOMY FLOOR STRIPPER.....	10	NATURAL WHITE BURNISHING FLOOR PADS.....	13	WET/DRY VACUUM CLEANER.....	29
ENCAPSULATED DETERGENT.....	26	NEUTRAL DAILY RINSE FREE MOP CLEANER.....	12	WHITE POLISHING FLOOR PADS.....	13
ENZYME CARPET SPOTTER.....	5	NON-ACID CREME CLEANSER.....	23		
ENZYME DEGREASER DIGESTER.....	15	NON-AMMONIATED GLASS CLEANER.....	17		

**WE SOURCE, SUPPLY, AND ULTIMATELY SOLVE
THE BIGGEST CHALLENGES FOR THE
PEOPLE WHO MANAGE THE PLACES,
MAINTAIN THE SPACES AND SHIP THE THINGS
THAT MAKE BUSINESS WORK.**

POLLOCK LOCATIONS

Dallas-Fort Worth, Texas

1 Pollock Place
Grand Prairie, TX 75050
PH: 972.263.0205
FX: 972.262.4737

Houston, Texas

6001 West By Northwest
Houston, TX 77040
PH: 713.934.6800
FX: 713.690.7805

Wichita Falls, Texas

4554 Barnett Rd
Wichita Falls, TX 76310
PH: 940.766.4301
FX: 940.723.2701

Charlotte, North Carolina

6965 Northpark Blvd, Suite H
Charlotte, NC 28216
PH: 704.599.9433
FX: 704.599.9611

Austin, Texas

8800 Shoal Creek Blvd, Ste. A
Austin, TX 78757
PH: 512.832.5681
FX: 512.832.0191

San Antonio, Texas

3802 Binz-Engleman Rd
San Antonio, TX 78219
PH: 210.226.5181
FX: 210.224.9571

Atlanta, Georgia

8015 Second Flag Dr
Austell, GA 30168
PH: 770.803.7800
FX: 770.803.7826

Fresno, California

3550 South Willow Avenue
Fresno, CA 93725

Jamesburg, New Jersey

111 Interstate Blvd., Ste. 200
Jamesburg, NJ 08831